



Northeast OY Conference

Friday, November 22, 2019

Chekemma Fulmore-Townsend – Briefing Doc

Best Practices Breakout Sessions - 11:45-12:45

Legislative Office Building
300 Capital Avenue, Hartford

ROOM 1C



1



2



3

90,000
YOUNG PEOPLE
in Philadelphia are seeking education and employment opportunities.

www.pyninc.org/annualreport

4

90,000
YOUNG PEOPLE
in Philadelphia are seeking education and employment opportunities.

while at the same time

46%
OF EMPLOYERS
struggle to fill jobs...
in fact, it's harder now than ever.*

www.pyninc.org/annualreport

5

2017-2018

Youth Served by PYN

PYN provides supports for youth and young adults in our community. A demographic snapshot:

Participation, Sept 2018

SHORT-TERM OPPORTUNITIES
These education and employment opportunities are offered in a short-term opportunity, often seasonally. Success is a critical entry point for many young people who have not yet been exposed to the world of work.

10,220 interventions received including:

- Business Career Exposure
- Business Service Learning
- Business Work Experience
- Business Internships
- Pilot Programs
- PYN-supported Partnerships

LONG-TERM OPPORTUNITIES
These opportunities support young people in education and employment for an extended experience, lasting longer than one quarter throughout the calendar or academic year.

4,800 interventions received including:

- EY Peer Centers
- Career Exposure
- Internships
- Pilot Programs
- WPA Youth Partnership and PYN-supported Partnerships

92% INTERVIEWED A BUSINESS LEADER
97% PYN PARTNER WITH A BUSINESS LEADER
96% INTERVIEWED AN EMPLOYEE OF A BUSINESS LEADER

95% OVERSEAS ATTAINERS
1800 OVER SEAS ATTAINERS

89% of PYN program participants experience poverty, living in households below the federal poverty line

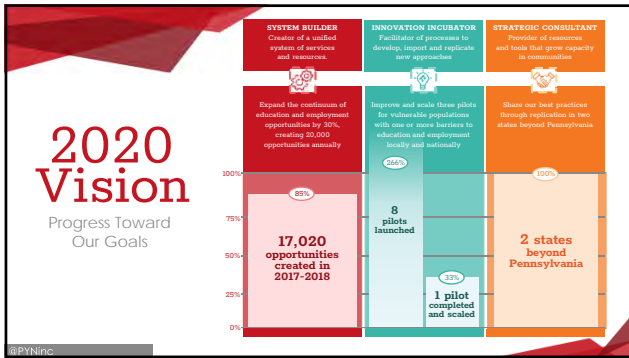
YOUTH SERVED: 975 CONTRACTED WORKERS
55 CONTRACTED PROVIDERS
\$6,262,031 IN YOUTH SALARY

GENDER
55% Female ♀, 45% Male ♂

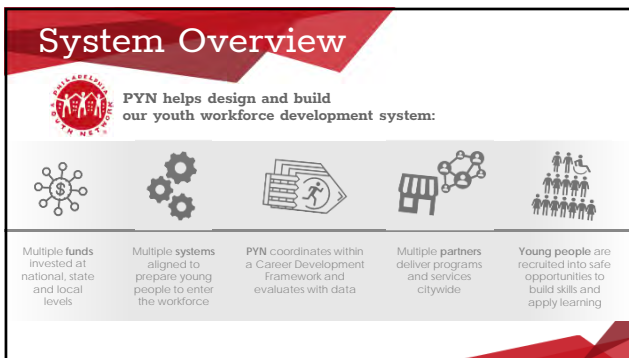
AGE
18-24, 25-34, 35-44, 45-54, 55-64, 65-74, 75-84, 85-94, 95-104

RACE
White, Black, Hispanic, Asian, Other

6



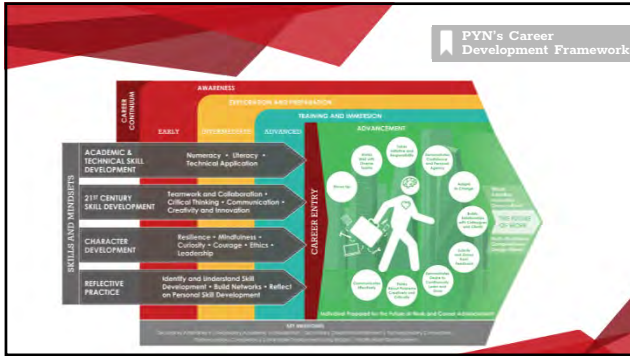
7



8

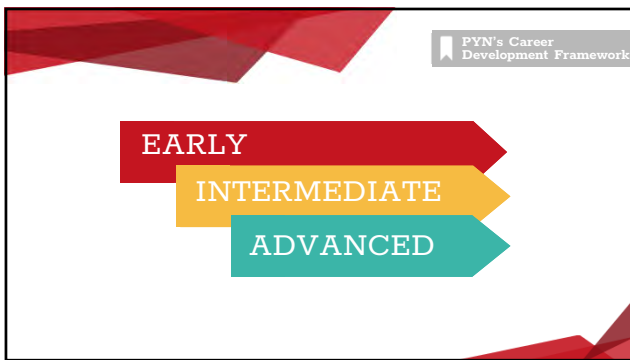


9



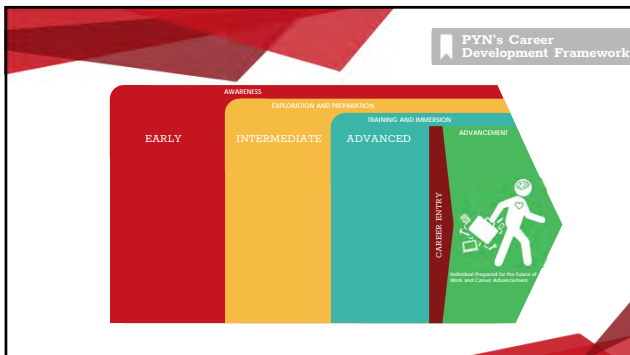
10

Career Development Framework



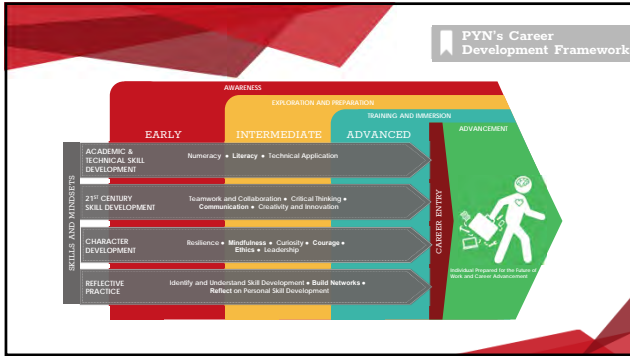
11

Tiered to meet skill-levels



12

...basis for building a **continuum**



12 B

skills and mindsets across the continuum



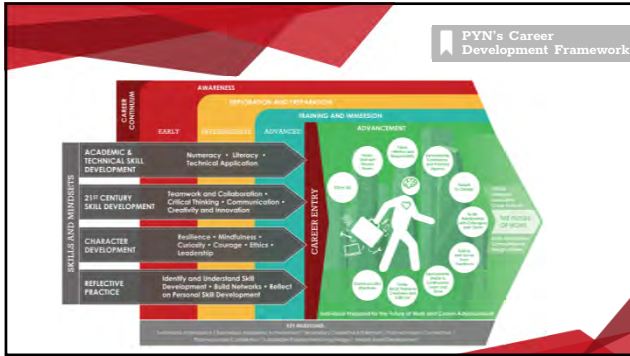
13

diversity of opporutnities (PYN-managed)



13 B

[click to add PYN-partnered impact]



(full view of the Framework)

14



[auto animation to next visual]

15



15 - AUTO

Want to learn more?
If you're interested in seeing what PYN can do for your community, contact us:
Info@pyninc.org // 267.502.3800 // @PYNinc

Partner and Program Alignment
Evaluating your progress against the Career Development Framework for enrolled youth, experiences and ensure partner support.

Strategic Workflow Assessment and Planning
Identifying the next evolution of your current goal or business plan and strategizing how to get there.

Assessing Pending Strategies
Using blended and blended learning to get to scale with efficiency and speed, without compromising quality.

Technology and Training
Streamlining processes through custom software solutions to help you accomplish your goals and meet your targets.

Programmatic Implementation
Applying the practices from Foundational Courses for Post-Secondary Training in your community.

Stay in touch!
f t i | @pyninc | pyninc.org
t | @chekemma | ctownsend@pyninc.org

learn more / Q&A
